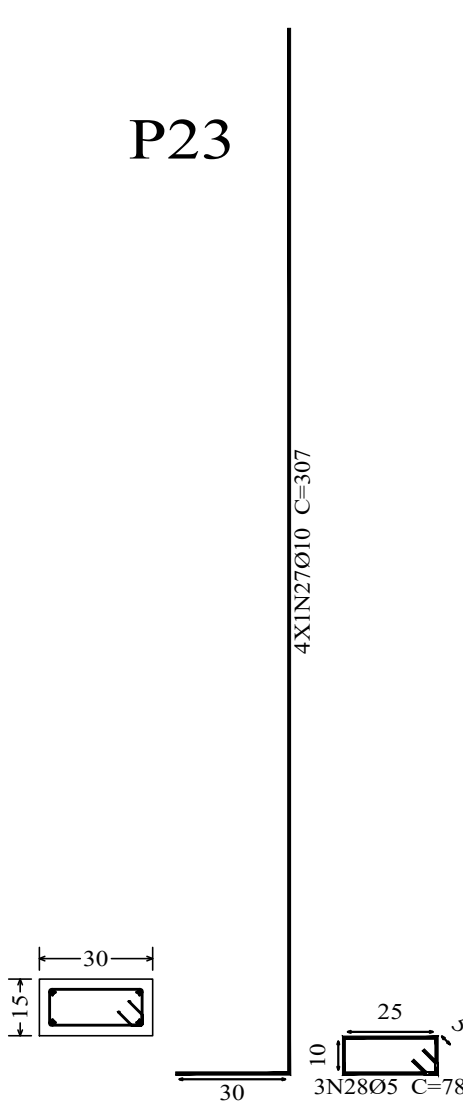
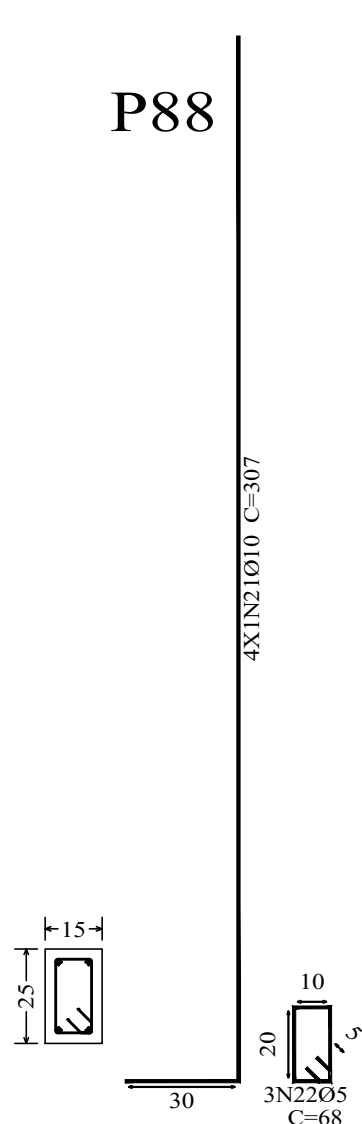
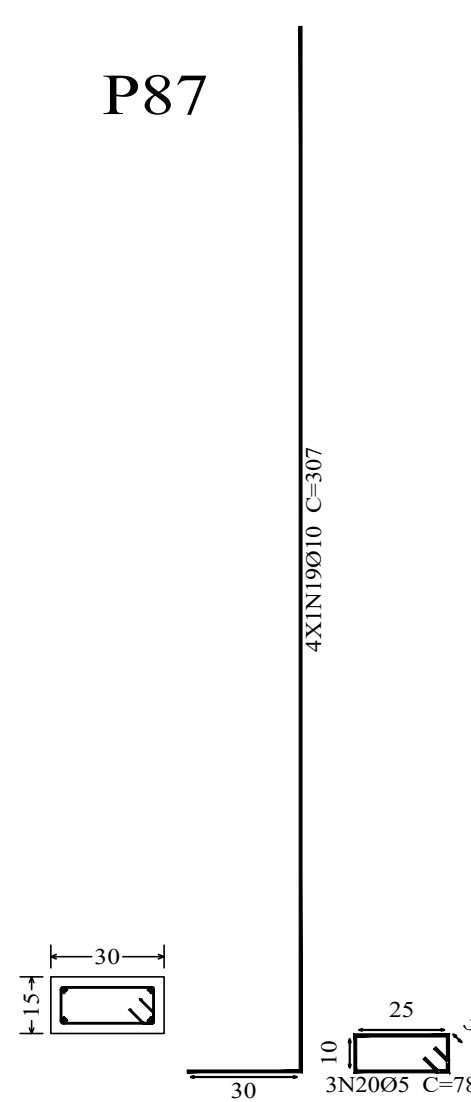
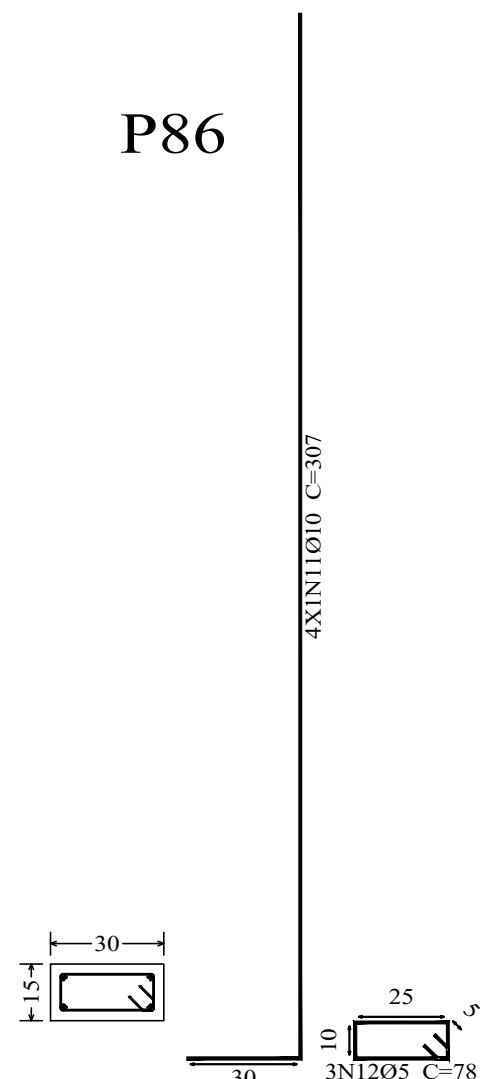
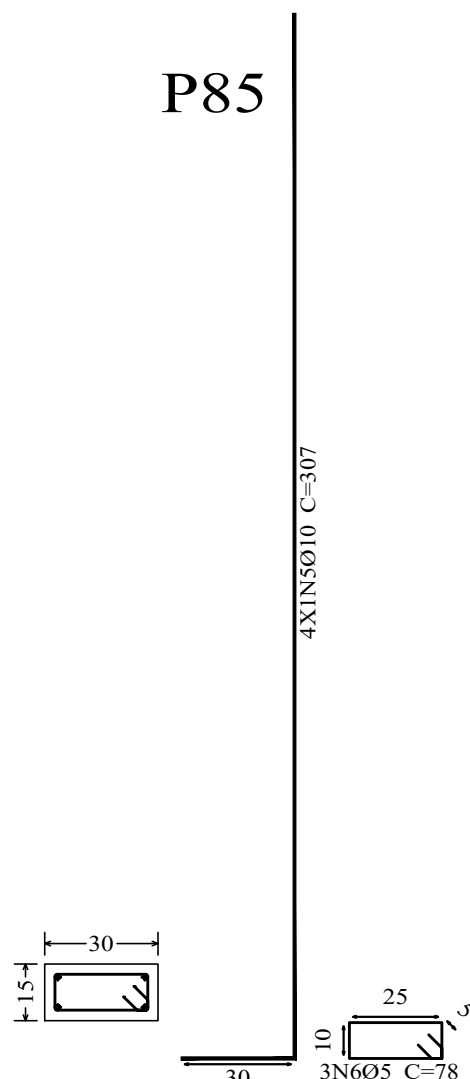
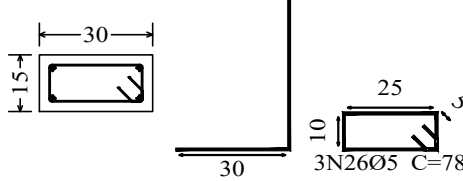
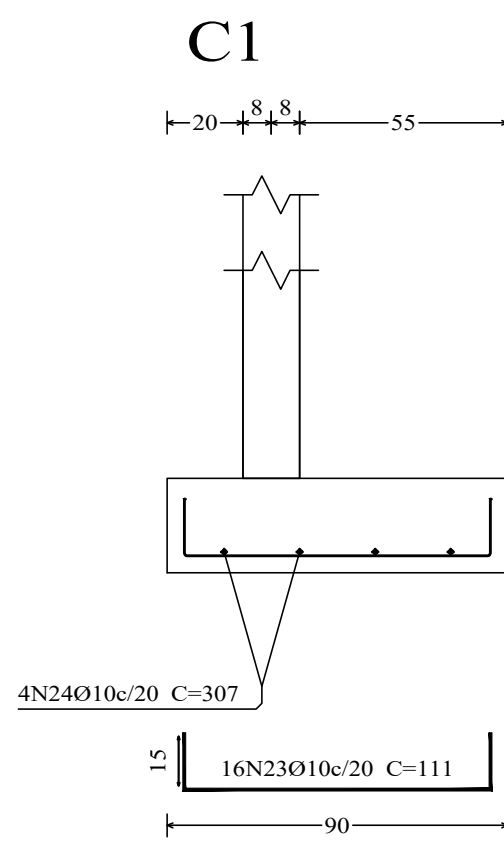
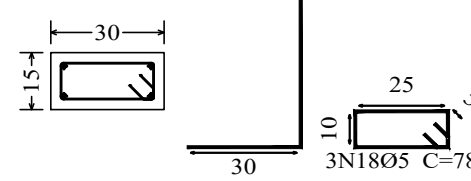
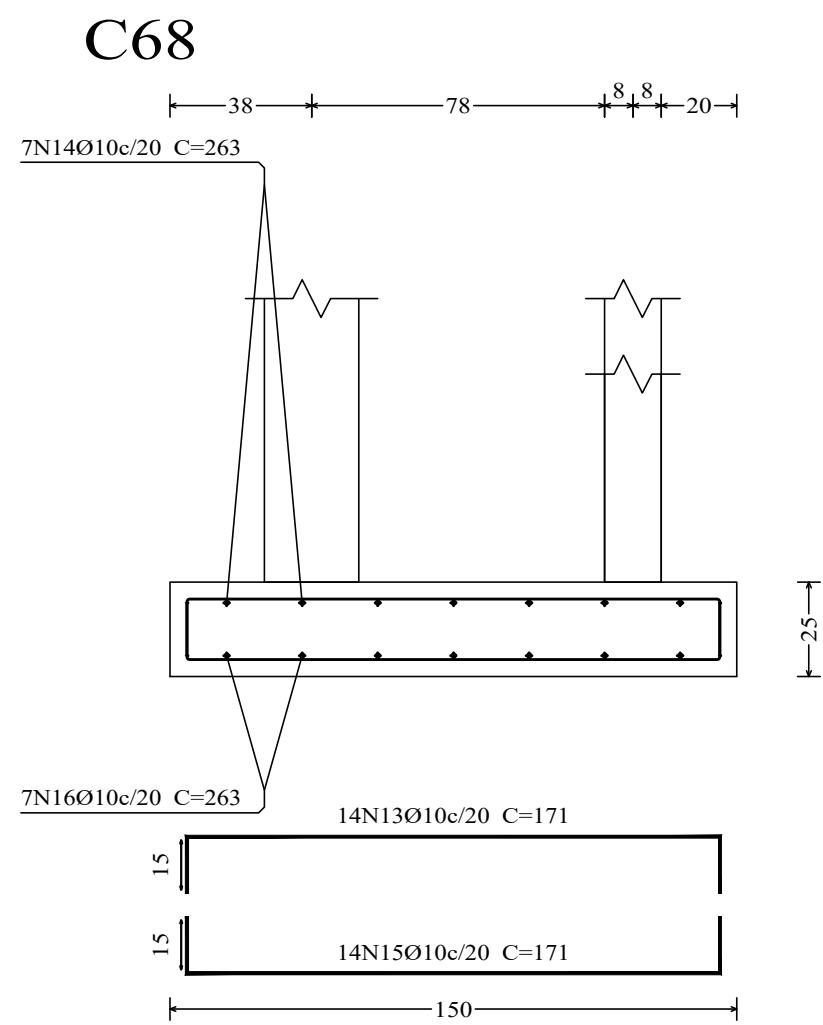
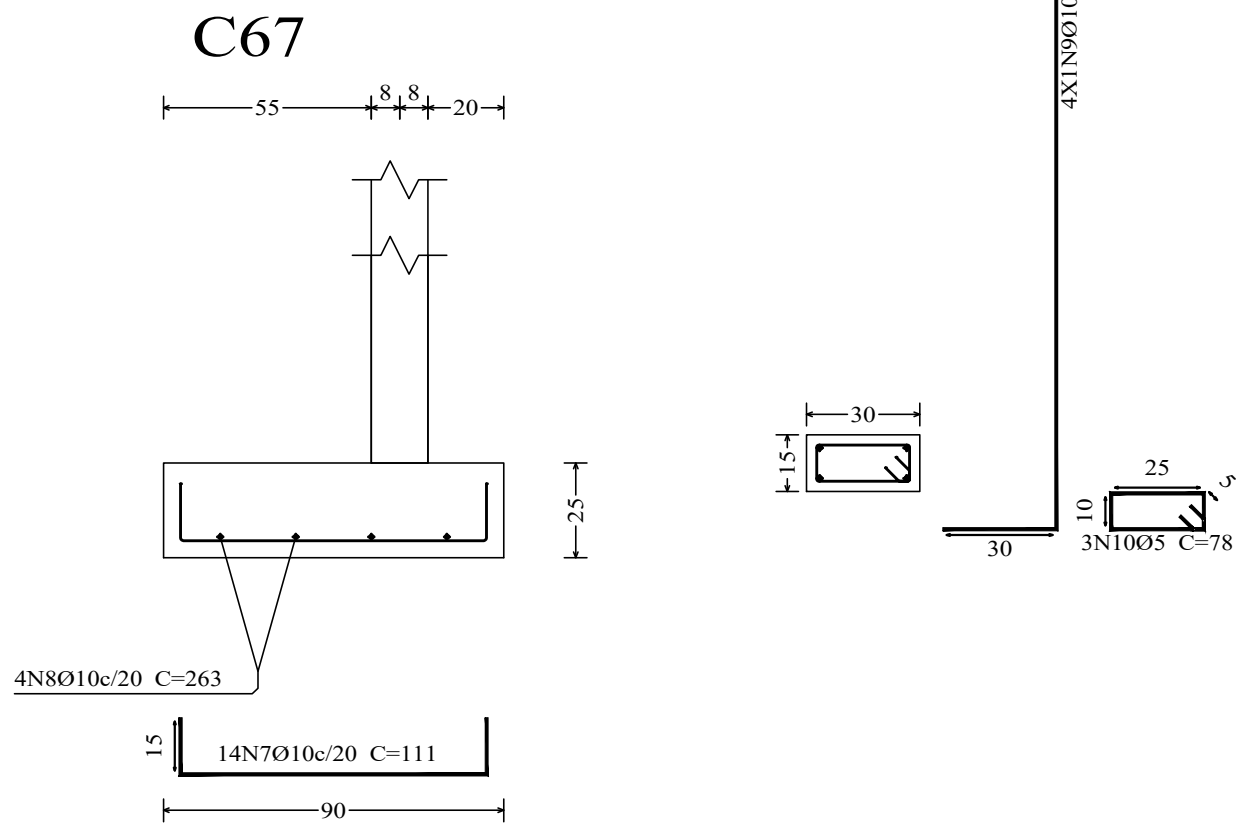
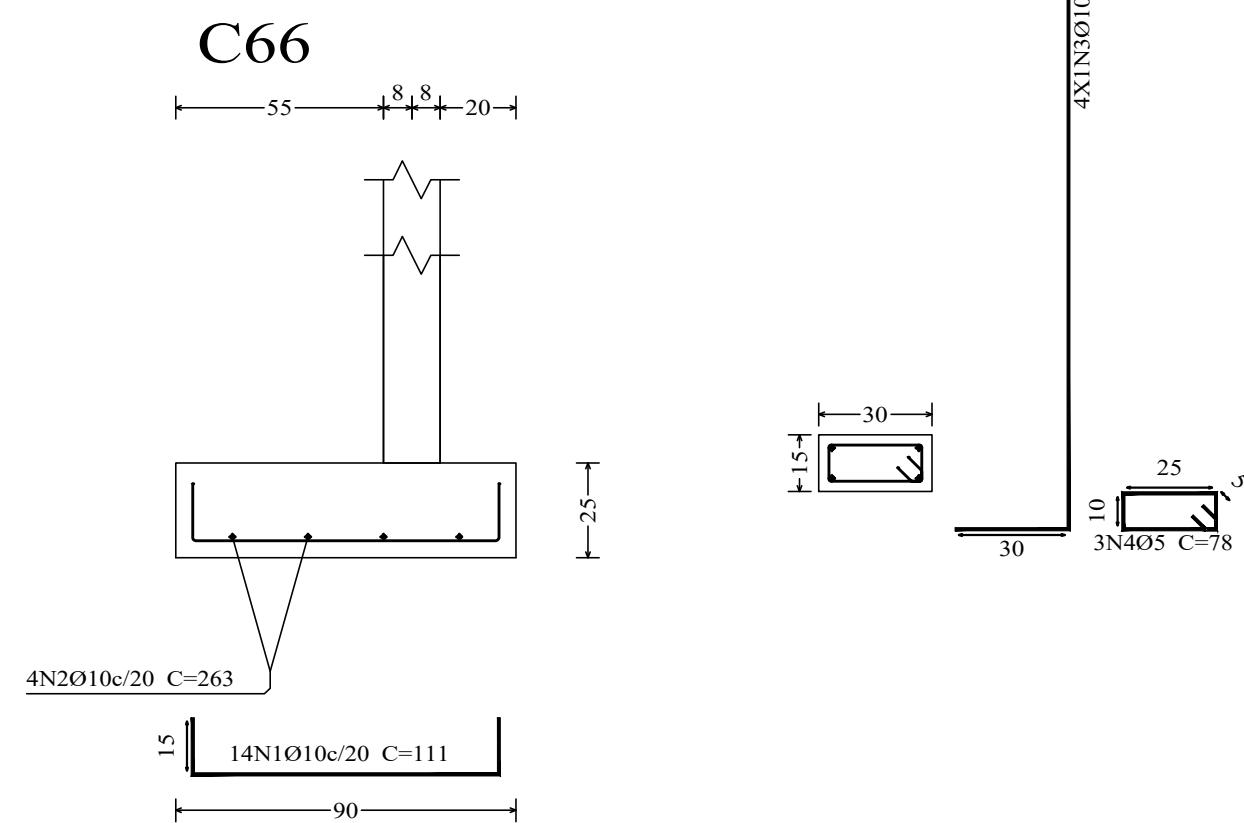


FUNDAÇÃO 03



Elemento	Pos.	Diam.	Q.	Deb.(cm)	Deb.(cm)	Comp.	Total (cm)	CA-50 (kg)	CA-60 (kg)
C66	1	Ø10	14	15	81	115	1554	9.6	
	2	Ø10	4		263	263	1052	6.5	
	3	Ø10	4	30	277	307	1228	7.6	
	4	Ø5	3			78	234		0.4
	5	Ø10	4	30	277	307	1228	7.6	0.4
	6	Ø5	3		78	78	234		0.4
							Total	31.3	0.8
C67	7	Ø10	14	15	81	115	1554	9.6	
	8	Ø10	4		263	263	1052	6.5	
	9	Ø10	4	30	277	307	1228	7.6	
	10	Ø5	3			78	234		0.4
	11	Ø10	4	30	277	307	1228	7.6	
	12	Ø5	3		78	78	234		0.4
							Total	31.3	0.8
C68	13	Ø10	14	15	141	171	2394	14.8	
	14	Ø10	7		263	263	1841	11.3	
	15	Ø10	14	15	141	151	2394	14.8	
	16	Ø10	7		263	263	1841	11.3	
	17	Ø10	4	30	277	307	1228	7.6	
	18	Ø5	3			78	234		0.4
	19	Ø10	4	30	277	307	1228	7.6	0.4
	20	Ø5	3			78	234		0.4
	21	Ø10	4	30	277	307	1228	7.6	0.4
	22	Ø5	3		68	68	204		0.3
							Total	75.0	1.1
C1	23	Ø10	16	15	81	115	1176	10.9	
	24	Ø10	4		307	307	1228	7.6	
	25	Ø10	4	30	277	307	1228	7.6	
	26	Ø5	3			78	234		0.4
	27	Ø10	4	30	277	307	1228	7.6	
	28	Ø5	3		78	78	234		0.4
							Total	33.7	0.8
							Ø5:	0.0	3.5
							Ø10:	171.3	0.0
							Total:	171.3	3.5

Resumo Aço Piso do Térreo Detalhamento fundação	Comp. total (m)	Peso (kg)	Total
CA-50 Ø10	4233.3	2609	2609
CA-60 Ø5	356.5	56	56
Total			2665